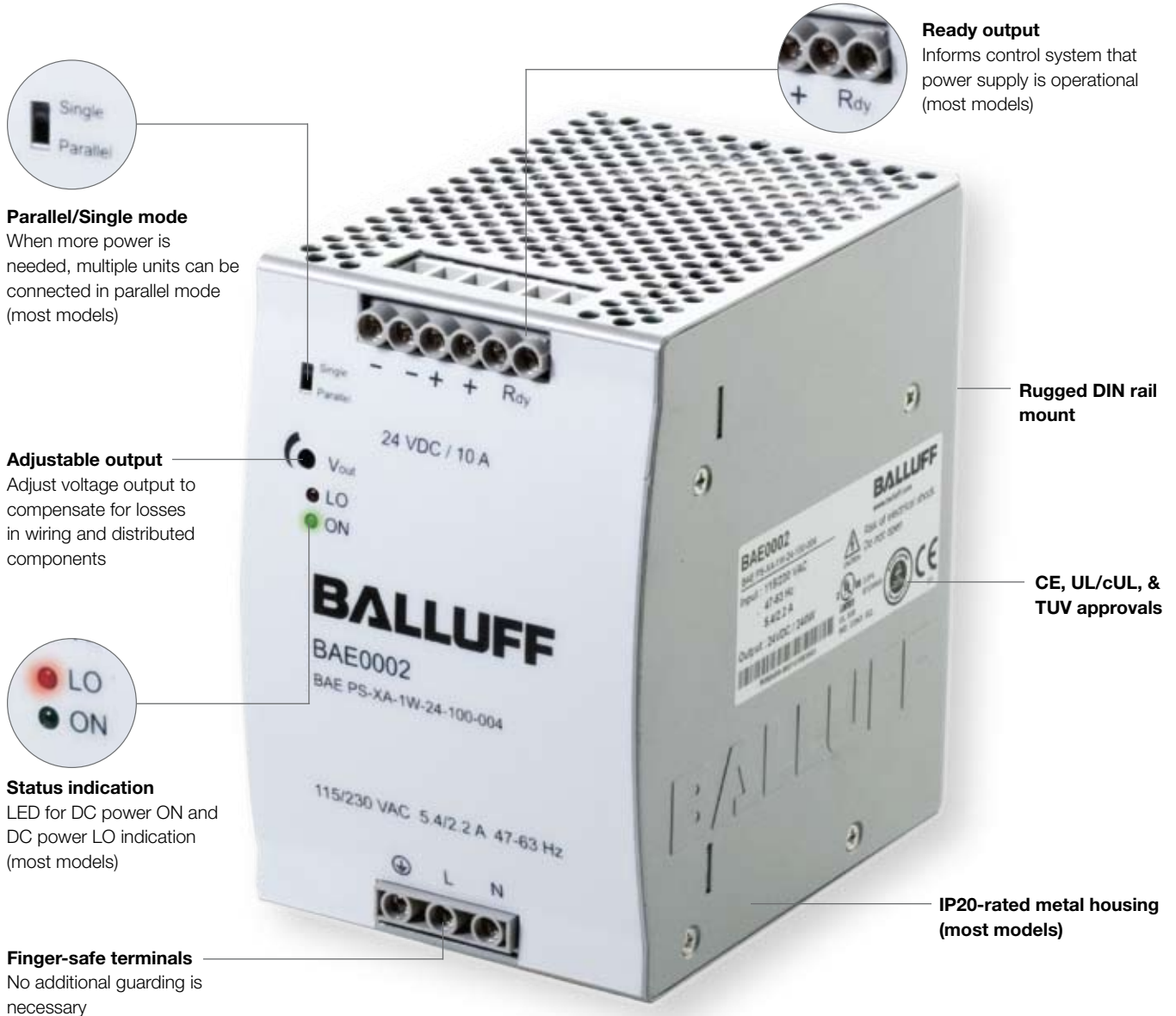


Balluff PS Power Supply Series

Reliable power for demanding industrial automation systems

All industrial automation systems need reliable power – power that is clean, spike-free, and controlled to provide the amount of power required by the system. Balluff has a long tradition of producing reliable quality automation control products. This tradition continues with this new line of power supplies. They add another piece to Balluff's total control solution, from standard inductive and photoelectric sensors and connectivity, to RFID and industrial network solutions, including our new line of I/O modules for Profibus, DeviceNet, and EtherNet I/P networks.

- **Ultra reliable Power Supplies**
Protects sensitive control electronics
- **Protects against unforeseen events**
Built-in advanced overload and overvoltage protection
- **Complete range of models to choose from**
One single model or a combination of models will meet your needs exactly
- **Clean, accurate power for the most demanding equipment**
Load regulation to +/- 1% on all models, ripple/noise less than 50mV on most models
- **Long life for less system unplanned downtime**
MTBF (mean time between failure) of over 210,000 hours/24 years while operating at published specifications for the duration

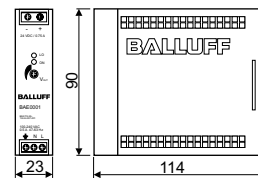
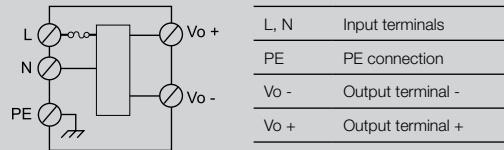


Power Supply

Single phase input voltage
750 mA output



Output current	0.75 A
Output wattage	18 W
Output voltage	24 V DC
Input voltage	100...240 V AC
Ordering code	BAE0001
Part number	BAE PS-XA-1W-24-007-001
Input voltage range	90...265 V AC / 120...370 V DC
Inrush current	115 V AC < 10 A / 230 V AC < 18 A
Line frequency	47...63 Hz
Input fuse	T2 A / 250 V AC internal
Voltage trim range	21.6...28.8 V DC
Temperature coefficient	±0.02 % / °C
Ripple and noise	50 mV
Hold-up time	115 V AC > 20 ms / 230 V AC > 75 ms
DC ON indicator	Green LED
DC LOW indicator	Red LED
Efficiency	77 %
Output short circuit	Hiccup-Modus
Switching frequency	> 100 kHz
Isolation voltage	3000 V AC
Isolation resistance	100 MΩ
Power up delay	< 1 s
Ambient temperature	-25 °C to +71 °C
Derating	-3 % / °C from +61 °C
Parallel switch mode	Yes (with external diodes)
Degree of protection per IEC 60529	IP 20
Ready output	No
Cooling	Air free convection
Housing material	Plastic
Weight	0.15 kg
Approvals	CE, UL/cUL, TUV



Power Supply

Single phase input voltage
1.25 A, 2.5 A output



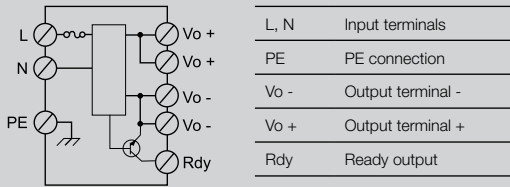
1.25 A
30 W
24 V DC
100...240 V AC

BAE0004

BAE PS-XA-1W-24-012-002

85...264 V AC / 90...375 V DC
115 V AC < 20 A / 230 V AC < 40 A
47...63 Hz
T2 A / 250 V AC internal
24.0...28.0 V DC
±0.02 % / °C
50 mV
115 V AC > 20 ms / 230 V AC > 30 ms
Green LED

86 %
Fold forward
> 100 kHz
3000 V AC
100 MΩ
< 1 s
-25 °C to +71°C
-2.5 % / °C from +61 °C
Yes (with external diodes)
IP 20
DC OK output
Air free convection
Plastic
0.29 kg
CE, UL/cUL, TUV



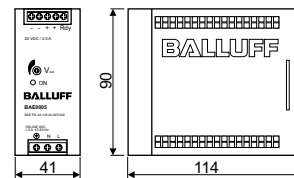
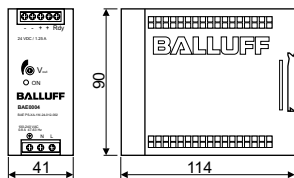
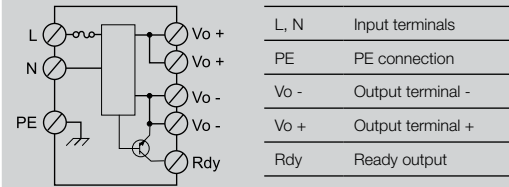
2.5 A
60 W
24 V DC
100...240 V AC

BAE0005

BAE PS-XA-1W-24-025-002

85...264 V AC / 90...375 V DC
115 V AC < 30 A / 230 V AC < 60 A
47...63 Hz
T2 A / 250 V AC internal
24.0...28.0 V DC
±0.02 % / °C
50 mV
115 V AC > 20 ms / 230 V AC > 30 ms
Green LED

89 %
Hiccup-Modus
> 100 kHz
3000 V AC
100 MΩ
< 1 s
-25 °C to +71°C
-2.5 % / °C from +61°C
Yes (with external diodes)
IP 20
DC OK output
Air free convection
Plastic
0.36 kg
CE, UL/cUL, TUV

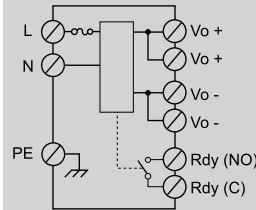


Power Supply

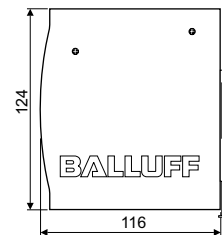
Single phase input voltage
5 A output



Output current	5 A
Output wattage	120 W
Output voltage	24 V DC
Input voltage	115/230 V AC (auto select)
Ordering code	BAE0006
Part number	BAE PS-XA-1W-24-050-003
Input voltage range	90...132 V AC; 186...264 V AC / 210...370 V DC
Inrush current	115 V AC < 24 A / 230 V AC < 48 A
Line frequency	47...63 Hz
Input fuse	T3.15 A / 250 V AC internal
Voltage trim range	22.5...28.5 V DC
Temperature coefficient	±0.03 % / °C
Ripple and noise	50 mV
Hold-up time	115 V AC > 25 ms / 230 V AC > 30 ms
DC ON indicator	Green LED
DC LOW indicator	Red LED
Efficiency	86 %
Output short circuit	Current limited
Switching frequency	> 80 kHz
Isolation voltage	3000 V AC
Isolation resistance	100 MΩ
Power up delay	< 1 s
Ambient temperature	-25 °C to +71 °C
Derating	-2.5 % / °C from +61 °C
Parallel switch mode	Yes
Degree of protection per IEC 60529	IP 20
Ready output	DC OK output relay
Cooling	Air free convection
Housing material	Metal
Weight	0.92 kg
Approvals	CE, UL/cUL, TUV



L, N	Input terminals
PE	PE connection
Vo -	Output terminal -
Vo +	Output terminal +
Rdy	Ready output

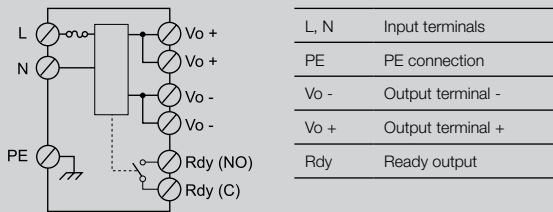


Power Supply

Single phase input voltage
10 A, 20 A output



10 A
240 W
24 V DC
115/230 V AC (auto select)
BAE0002
BAE PS-XA-1W-24-100-004
93...132 V AC; 186...264 V AC / 210...370 V DC
115 V AC < 30 A / 230 V AC < 60 A
47...63 Hz
T6.3 A / 250 V AC internal
22.5...28.5 V DC
±0.02 % / °C
100 mV
115 V AC > 25 ms / 230 V AC > 30 ms
Green LED
Red LED
89 %
Current limited
> 80 kHz
3000 V AC
100 MΩ
< 1 s
-25 °C to +71 °C
-2.5 % / °C from +61 °C
Yes
IP 20
DC OK output relay
Air free convection
Metal
1.0 kg
CE, UL/cUL, TUV



20 A
480 W
24 V DC
115/230 V AC (auto select)
BAE0003
BAE PS-XA-1W-24-200-005
90...264 V AC / 120...370 V DC
115 V AC < 25 A / 230 V AC < 50 A
47...63 Hz
T10 A / 250 V AC internal
22.5...28.5 V DC
±0.02 % / °C
100 mV
115 V AC > 25 ms / 230 V AC > 30 ms
Green LED
Red LED
89 %
Current limited
> 100 kHz
3000 V AC
100 MΩ
< 1 s
-25 °C to +71 °C
-2.5 % / °C from +61 °C
Yes
IP 20
DC OK output relay
Air free convection
Metal
1.92 kg
CE, UL/cUL, TUV

