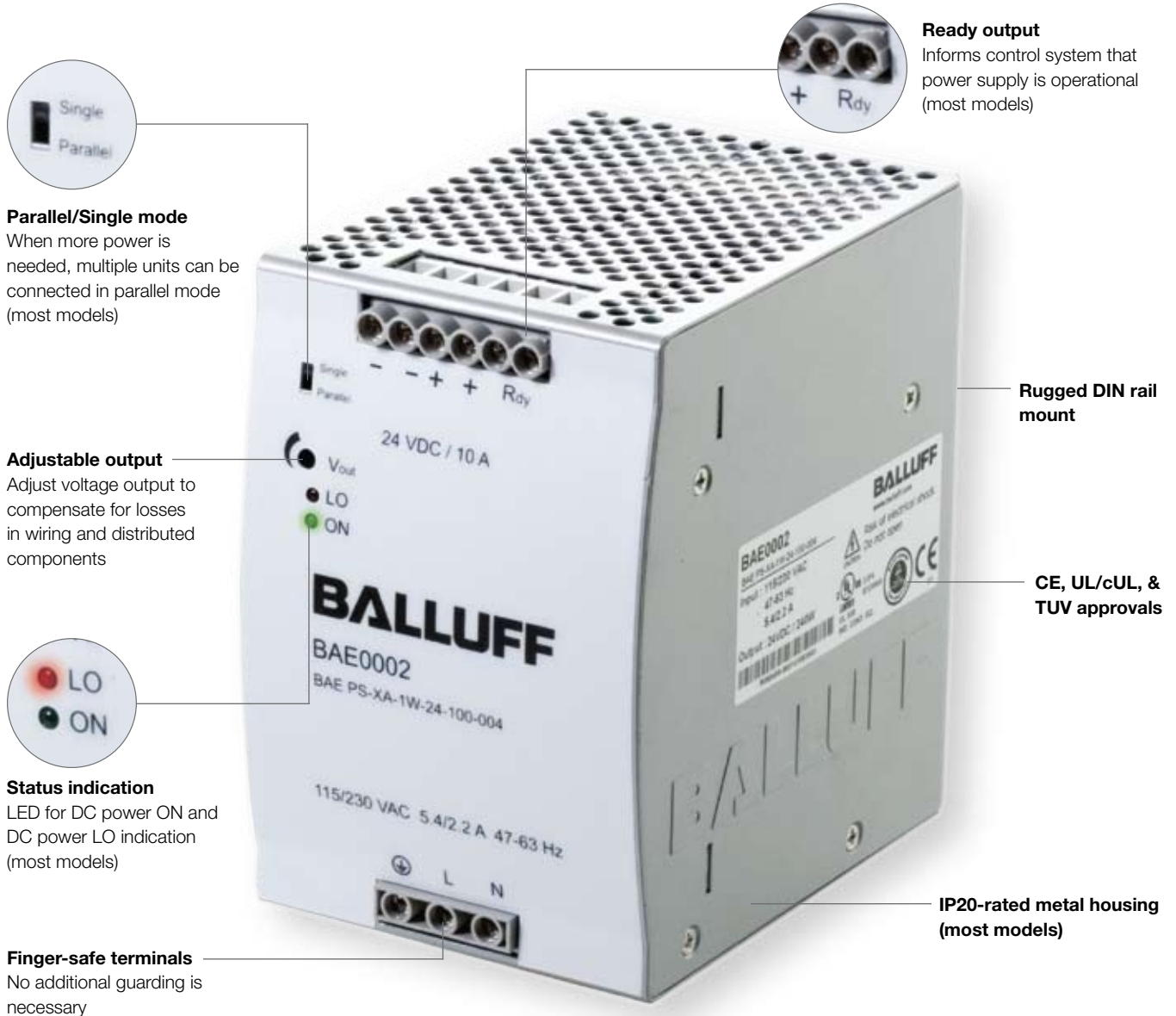


Balluff PS Power Supply Series

Reliable power for demanding industrial automation systems

All industrial automation systems need reliable power – power that is clean, spike-free, and controlled to provide the amount of power required by the system. Balluff has a long tradition of producing reliable quality automation control products. This tradition continues with this new line of power supplies. They add another piece to Balluff's total control solution, from standard inductive and photoelectric sensors and connectivity, to RFID and industrial network solutions, including our new line of I/O modules for Profibus, DeviceNet, and EtherNet I/P networks.

- **Ultra reliable Power Supplies**
Protects sensitive control electronics
- **Protects against unforeseen events**
Built-in advanced overload and overvoltage protection
- **Complete range of models to choose from**
One single model or a combination of models will meet your needs exactly
- **Clean, accurate power for the most demanding equipment**
Load regulation to +/- 1% on all models, ripple/noise less than 50mV on most models
- **Long life for less system unplanned downtime**
MTBF (mean time between failure) of over 210,000 hours/24 years while operating at published specifications for the duration

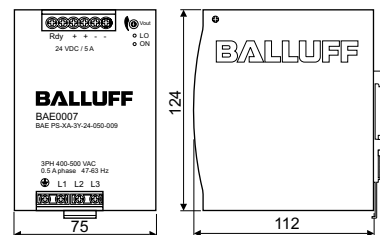


Power Supply

Three phase input voltage
5 A output



Output current	5 A										
Output wattage	120 W										
Output voltage	24 V DC										
Input voltage	3x 340...575 V AC										
Ordering code	BAE0007										
Part number	BAE PS-XA-3Y-24-050-009										
Input voltage range	340...575 V AC / 480...820 V DC										
Inrush current	< 10 A										
Line frequency	47...63 Hz										
Input fuse	2 A / 600 V AC internal/phase										
Voltage trim range	22.5...28.5 V DC										
Temperature coefficient	±0.02 % / °C										
Ripple and noise	100 mV										
Hold-up time	> 20 ms										
DC ON indicator	Green LED										
DC LOW indicator	Red LED										
Efficiency	89 %										
Output short circuit	Current limited										
Switching frequency	> 100 kHz										
Isolation voltage	3000 V AC										
Isolation resistance	100 MΩ										
Power up delay	< 1 s										
Ambient temperature	-25 °C to +71 °C										
Derating	-2.5 % / °C from +61 °C										
Parallel switch mode	Yes (with external diodes)										
Degree of protection per IEC 60529	IP 20										
Ready output	DC OK output relay										
Cooling	Air free convection										
Housing material	Metal										
Weight	0.8 kg										
Approvals	CE, UL/cUL, TUV										
Wiring diagram	<table border="1" style="margin-left: 20px;"> <tr> <td>L, N</td> <td>Input terminals</td> </tr> <tr> <td>PE</td> <td>PE connection</td> </tr> <tr> <td>Vo -</td> <td>Output terminal -</td> </tr> <tr> <td>Vo +</td> <td>Output terminal +</td> </tr> <tr> <td>Rdy</td> <td>Ready output</td> </tr> </table>	L, N	Input terminals	PE	PE connection	Vo -	Output terminal -	Vo +	Output terminal +	Rdy	Ready output
L, N	Input terminals										
PE	PE connection										
Vo -	Output terminal -										
Vo +	Output terminal +										
Rdy	Ready output										



Power Supply

Three phase input voltage
10 A, 20 A output



10 A
240 W
24 V DC
3x 340...575 V AC

BAE0008

BAE PS-XA-3Y-24-100-006

340...575 V AC / 480...820 V DC

< 20 A

47...63 Hz

T2 A / 600 V AC internal/phase

22.5...28.5 V DC

±0.02 % / °C

100 mV

> 20 ms

Green LED

Red LED

90 %

Current limited

> 100 kHz

3000 V AC

100 MΩ

< 1 s

-25 °C to +71 °C

-2.5 % / °C from +61 °C

Yes

IP 20

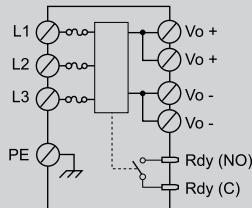
DC OK output relay

Air free convection

Metal

1.1 kg

CE, UL/cUL, TUV



L, N	Input terminals
PE	PE connection
Vo -	Output terminal -
Vo +	Output terminal +
Rdy	Ready output

20 A
480 W
24 V DC
3x 340...575 V AC

BAE0009

BAE PS-XA-3Y-24-200-007

340...575 V AC / 480...820 V DC

< 20 A

47...63 Hz

3.15 A / 500 V AC internal/phase

22.5...28.5 V DC

±0.02 % / °C

100 mV

> 20 ms

Green LED

Red LED

90 %

Current limited/Hiccup-Modus

> 100 kHz

3000 V AC

100 MΩ

< 1 s

-25 °C to +71 °C

-2.5 % / °C from +61 °C

Yes

IP 20

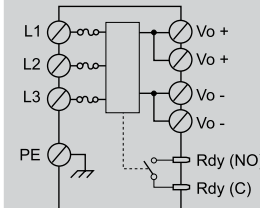
DC OK output relay

Air free convection

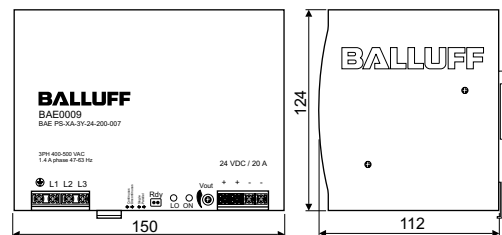
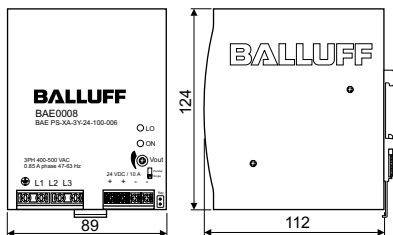
Metal

1.75 kg

CE, UL/cUL, TUV



L, N	Input terminals
PE	PE connection
Vo -	Output terminal -
Vo +	Output terminal +
Rdy	Ready output



Power Supply

Three phase input voltage
40 A output



Output current	40 A
Output wattage	960 W
Output voltage	24 V DC
Input voltage	3x340...575 V AC
Ordering code	BAE000A
Part number	BAE PS-XA-3Y-24-400-008
Input voltage range	340...575 V AC / 480...820 V DC
Inrush current	< 30 A
Line frequency	47...63 Hz
Input fuse	T5 A / 500 V AC internal/phase
Voltage trim range	22.5...28.5 V DC
Temperature coefficient	±0.02 % / °C
Ripple and noise	80 mV
Hold-up time	> 20 ms typ 15 ms @ 400 V AC / typ 30 ms @ 500 V AC
DC ON indicator	Green LED
DC LOW indicator	Red LED
Efficiency	92 %
Output short circuit	Current limited
Switching frequency	> 100 kHz
Isolation voltage	3000 V AC
Isolation resistance	100 MΩ
Power up delay	< 1 s
Ambient temperature	-25 °C to +71 °C
Derating	-3.5 % / °C from +61 °C
Parallel switch mode	Yes (with external diodes)
Degree of protection per IEC 60529	IP 20
Ready output	No
Cooling	Air free convection
Housing material	Metal
Weight	3.2 kg
Approvals	CE, UL/cUL, TUV

